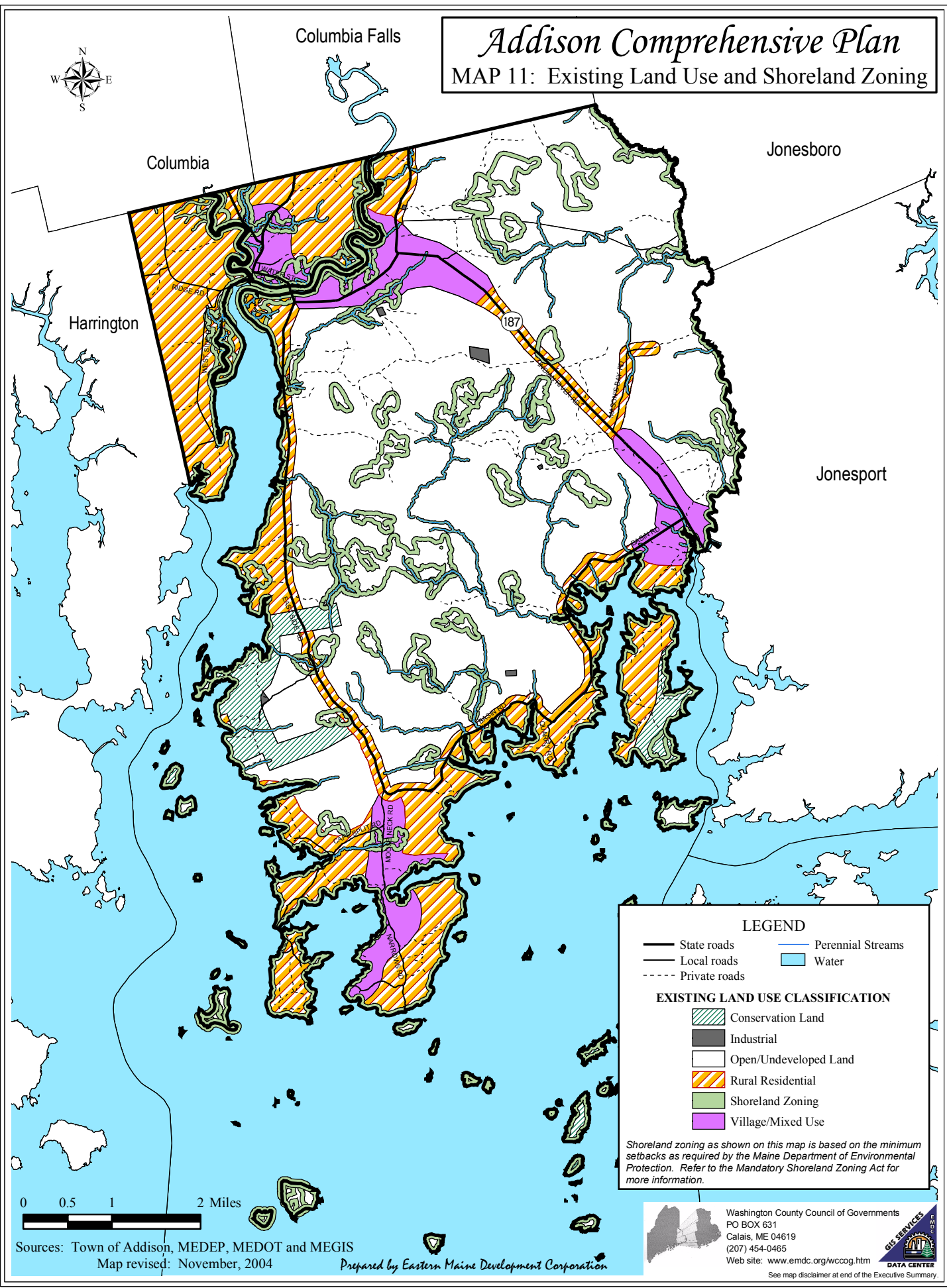


Addison Comprehensive Plan

MAP 11: Existing Land Use and Shoreland Zoning



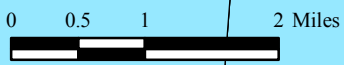
LEGEND

- State roads
- Local roads
- - - Private roads
- Perennial Streams
- Water

EXISTING LAND USE CLASSIFICATION

- Conservation Land
- Industrial
- Open/Undeveloped Land
- Rural Residential
- Shoreland Zoning
- Village/Mixed Use

Shoreland zoning as shown on this map is based on the minimum setbacks as required by the Maine Department of Environmental Protection. Refer to the Mandatory Shoreland Zoning Act for more information.



Sources: Town of Addison, MEDEP, MEDOT and MEGIS
 Map revised: November, 2004

Prepared by Eastern Maine Development Corporation

Washington County Council of Governments
 PO BOX 631
 Calais, ME 04619
 (207) 454-0465
 Web site: www.emdc.org/wccog.htm

See map disclaimer at end of the Executive Summary.